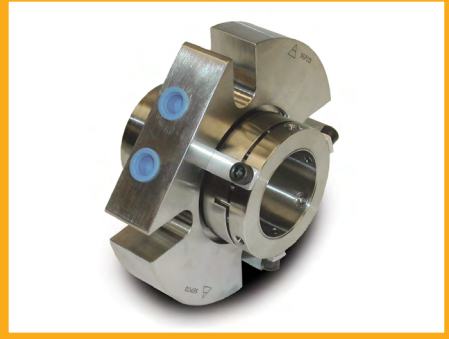
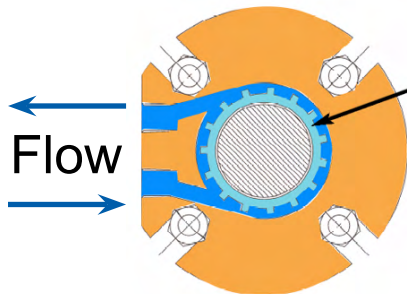


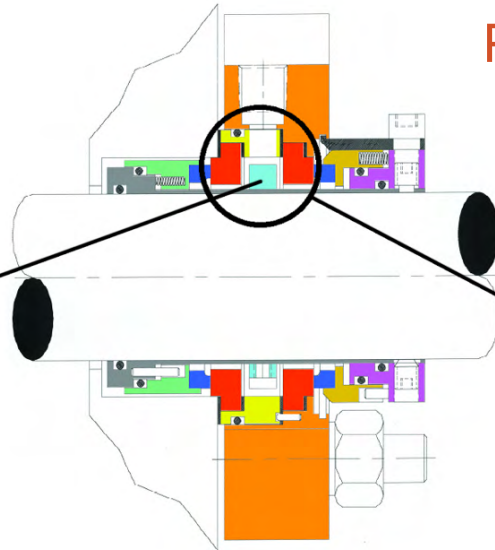
D T P



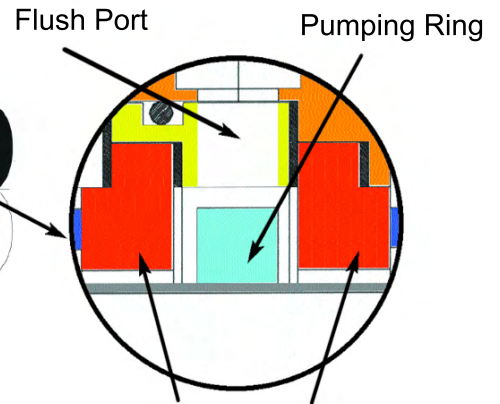
The DTP is a multiple, cartridge-mounted mechanical seal. It is rugged and dependable, yet fully disposable. It is priced at or below the cost of most competitors repaired cartridge-mounted seals.



Barrier Fluid Flow



Pumping Ring Detail



Stationary Faces

Cartridge Mounted

- Easy installation
- Facilitates impeller adjustments
- No critical installation measurements

Fits ANSI Standard & Big Bore Seal Chambers

- Off-the-shelf availability

Pumping Ring Design

- Increased cooling efficiency
- Ideal for closed loop convection cooling systems

Reciprocally Balanced

- Higher operating pressures
- Functions in either a tandem or double mode
- Capable of handling operational surge conditions

Metal Parts: Standard metal parts are 316ss. Other materials are available on request.

Faces: Standard rotary face materials are high quality chemical grade carbon-graphite, silicon carbide, and solid nickel bound tungsten carbide for fitting shaft sizes larger than 2-5/8". Standard stationary seat ring material is silicon carbide for seal sizes up to 4", and solid nickel bound tungsten carbide for fitting shaft sizes larger than 4".

Elastomers: Standard package is Aflas®. Viton®, EPR and perfluorinated elastomers are available on request.

Tangentially Drilled Flush Ports

Reduces flow resistance • Improves circulation

This information is based on data that we believe to be reliable. Since conditions of product use are outside of our control, we make no warranties, expressed or implied and assume no liability in connection with any use of this information.