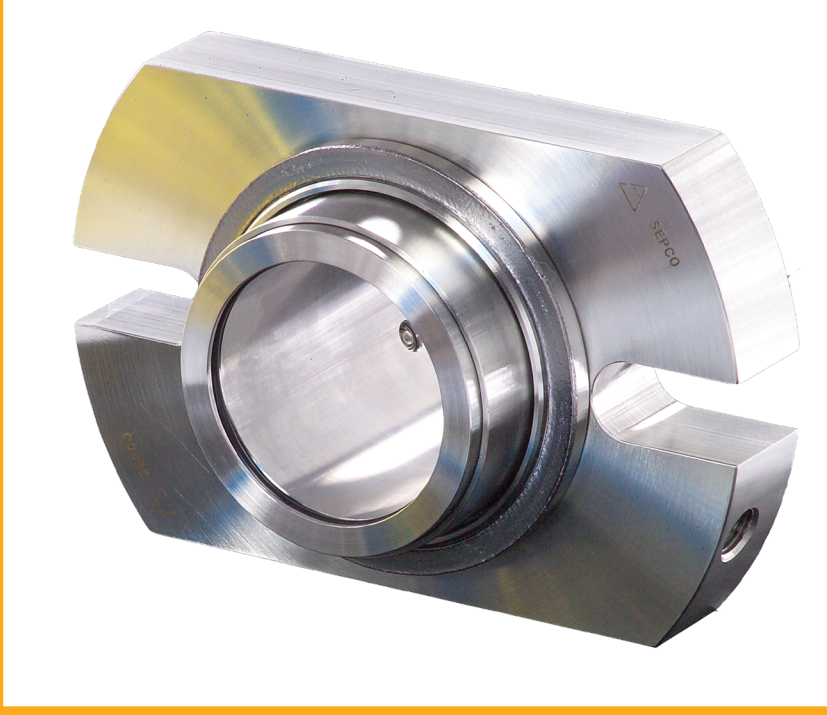


D R C



The SEPCO® Double Rotary Cartridge is a multiple, cartridge mounted, rotary seal designed to be easily adapted on equipment that is difficult to fit. Although inexpensive, it is rugged and highly dependable. The unit is ideal for installation on positive displacement pumps moving abrasive, sticky products requiring multiple seals operating in conjunction with closed loop systems. The gland is machined for superior strength and corrosion resistance. Machining allows for modifications within the seal instead of modifying the equipment. The narrow cross-section and short axial length allows use on equipment with limited space.

Cartridge Mounted

The DRC is a completely self-contained unit pre-assembled and pre-set at the factory for ease of installation.

Reciprocal Balanced

The inboard seal is hydraulically balanced to permit the seal to operate in either a double or tandem mode. This provides lubrication of the inboard seal faces without separation and leakage.

Clamped-In Mating Ring

Stationaries are clamped in allowing for higher pressure operation

Versatile

The gland is machined for superior strength and corrosion resistance. Machining allows for modifications within the seal instead of modifying the equipment. The narrow cross-section and short axial length allows use on equipment with limited space.

Multiple Springs

Multiple springs provide even mechanical loads for cooler operation and are isolated to prevent clogging.

Static Shaft O-Ring

The o-ring that seals to the shaft is static and not required to slide axially to adjust for seal face misalignment. This prevents wear and the need to replace expensive shafts.

This information is based on data that we believe to be reliable. Since conditions of product use are outside of our control, we make no warranties, expressed or implied and assume no liability in connection with any use of this information.

Certified to ISO 9001: 2000 Standards.

Updated October 2013

Quality Fluid Sealing Solutions for Industry.