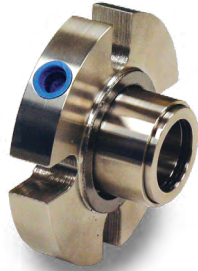


S R C

The SRC is a single, internal mechanical seal. This simplified rotary design is less expensive than most competitor's single cartridge mounted repaired units. Yet the SRC is rugged and highly dependable. The SRC is fully disposable, which provides consistent reliability while eliminating excessive cost and headaches associated with seal repair.



Cartridge Mounted

- Reduces installation related failures
- Speeds up installation time
- Impeller adjustments can be made on-line

Internally Balanced

- Loads lighter
- Runs cooler at higher operating pressure
- Expensive shouldered shafts/sleeves are not required to achieve hydraulic balance

Universal

- Fits standard ANSI stuffing boxes and oversized seal cavities
- Flushed, slotted, machined glands offer durability and versatility

Compact

- Fits shallow stuffing boxes
- Clears short first obstructions without equipment modifications.

Static O-Ring

- Will not fret or wear equipment, eliminating shaft/sleeve replacement

Dynamic O-Ring

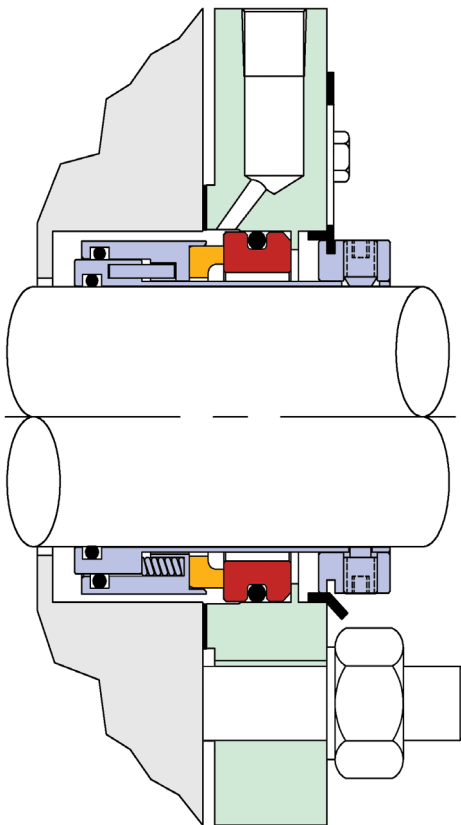
- Moves toward a clean surface as seal faces wear preventing face separation and subsequent leakage

Isolated Multiple Springs

- Prevents clogging from suspended solids
- Provides even face loads for cooler operation and longer seal life

Metal Parts

- Standard metal parts are 316ss.
- Other materials are available on request.



Faces: Standard rotary face materials are high quality chemical grade carbon-graphite, silicon carbide, and solid nickel bound tungsten carbide for fitting shaft sizes larger than 2-5/8". Standard stationary seat ring material is silicon carbide for seal sizes up to 4", and solid nickel bound tungsten carbide for fitting shaft sizes larger than 4".

Elastomers: Standard package is Aflas®. Viton®, EPR and perfluorinated elastomers are available on request.

This information is based on data that we believe to be reliable. Since conditions of product use are outside of our control, we make no warranties, expressed or implied and assume no liability in connection with any use of this information.