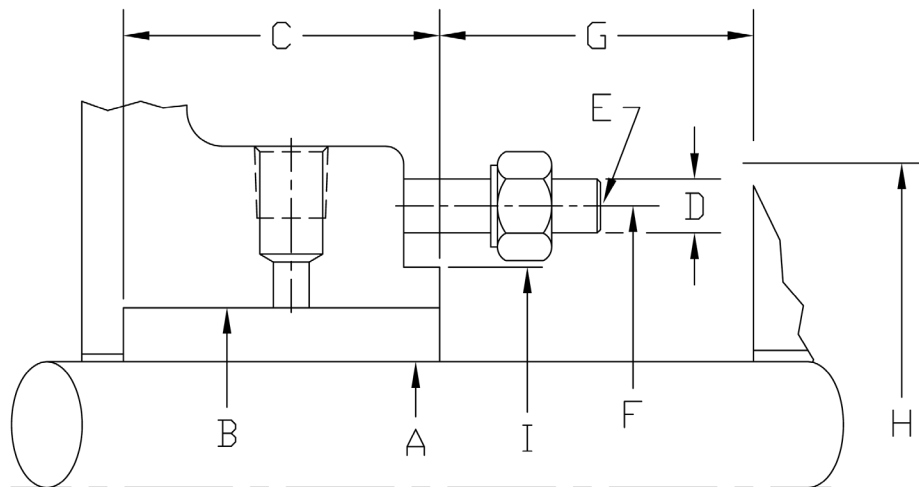


# MECHANICAL SEAL APPLICATION DATA



**FOR A MECHANICAL SEAL PRODUCT RECOMMENDATION  
PLEASE PROVIDE THE FOLLOWING INFORMATION.**

**Company:** \_\_\_\_\_  
\_\_\_\_\_  
\_\_\_\_\_

**Submitted by:** \_\_\_\_\_

**Equipment Data:**

Identification of Equipment: \_\_\_\_\_  
 Manufacturer of Equipment: \_\_\_\_\_  
 Serial Number: \_\_\_\_\_  
 Model Number: \_\_\_\_\_  
 Size: \_\_\_\_\_  
 Type: \_\_\_\_\_  
 Shaft Speed: \_\_\_\_\_

**Dimensional Information (see drawing):**

A. Shaft or Sleeve OD: \_\_\_\_\_  
 B. Stuffing Box Bore: \_\_\_\_\_  
 C. Stuffing Box Depth: \_\_\_\_\_  
 D. Stud Size: \_\_\_\_\_  
 E. Number of Studs: \_\_\_\_\_  
 F. Stud Circle Diameter: \_\_\_\_\_  
 G. Distance to First Obstruction: \_\_\_\_\_  
 H. Maximum OD for Round Gland: \_\_\_\_\_  
 I. Maximum Dimensions for Elliptical Gland: \_\_\_\_\_  
 \_\_\_\_\_

**Pump Features:**

Case Split:  Solid  Horiz.  Vertical  
 Wetted Metal Parts Material: \_\_\_\_\_  
 Cooling Jacket on Pump?  Yes  No  
 Has Pump Been Altered?  Yes  No  
 Is Service Continuous?  Yes  No

**Pressures**

Suction: \_\_\_\_\_  
 Discharge: \_\_\_\_\_  
 Stuffing Box: \_\_\_\_\_

**Environmental Controls:**

Clean Liquid Flush Available?  Yes  No  
 Quench Liquid or Steam Available?  Yes  No  
 Cooling Water Available?  Yes  No  
 Is System Cleaned?  Yes  No  
 With What? \_\_\_\_\_

**Fluid Characteristics:**

Product to be Sealed: \_\_\_\_\_  
 Concentration \_\_\_\_\_  
 Temperature \_\_\_\_\_  
 pH Value \_\_\_\_\_  
 Specific Gravity: \_\_\_\_\_  
 Are Solids Present?  Yes  No  
 Does Fluid Set Up & Harden?  Yes  No  
 Does Fluid Crystallize?  Yes  No  
 Is Fluid Toxic or Dangerous?  Yes  No  
 Is Fluid Corrosive?  Yes  No

QF18035 (5/7/2014)



**Phone:** 205.403.7500 / 800.633.4770  
**Fax:** 205.403.7592 / 800.426.3533  
**Mail:** 123 Airpark Industrial Rd.  
 Alabaster, AL 35007  
**Email:** info@sepco.com  
**Website:** www.sepco.com