

DRP Dual Rotary Pumper

The DRP is a multiple, cartridge-mounted mechanical seal that is rugged, dependable, and very affordable. It is reciprocally-balanced and is capable of operating in a double or tandem mode. The DRP is suitable in all types of industrial applications where leakage of hazardous or costly fluids cannot be tolerated and where positive lubrication is required from an external source without process dilution.

FEATURES & BENEFITS

Cartridge Mounted

- Easy Installation
- Facilitates impeller adjustments
- No critical installation measurements

Hydraulically Balanced

- Maintains interfacial lubrication
- Reduces power consumption
- Higher operating pressures
- Functions in either tandem or double mode

Precision Fit

- Fits ANSI standard and big bore seal chambers
- Requires no equipment modifications

Internal Pumping Device

- Increases cooling efficiency
- Ideal for closed-loop flush systems

Tangentially-Drilled Flush Connections

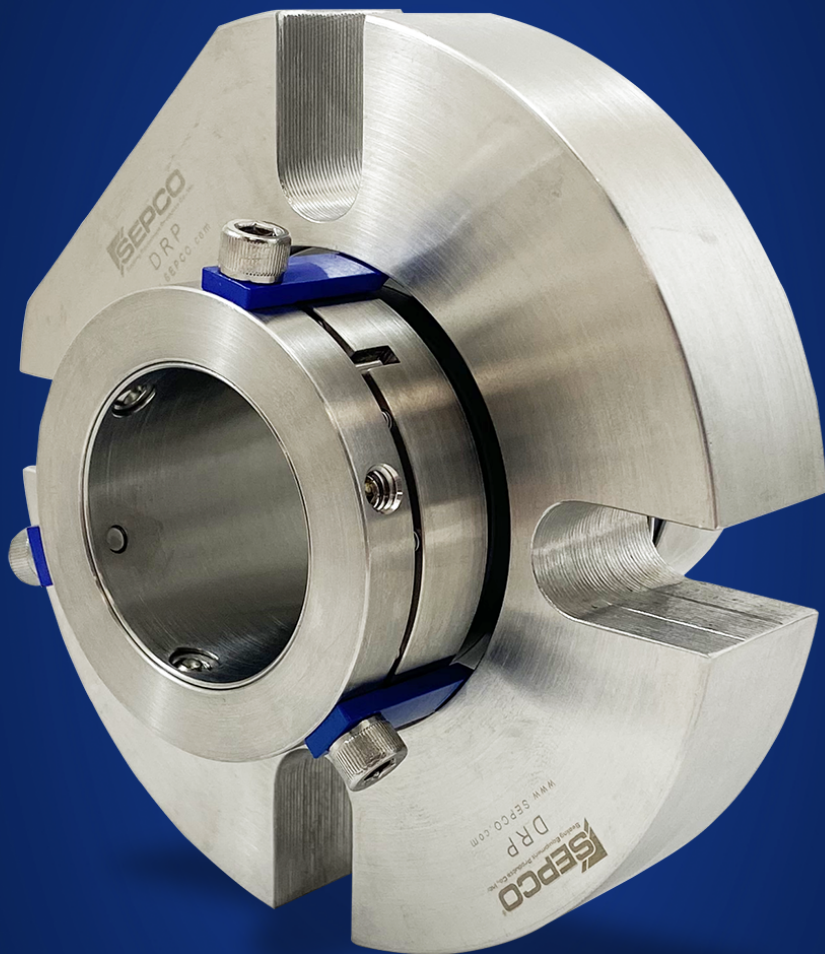
- Reduces flow resistance
- Improves circulation

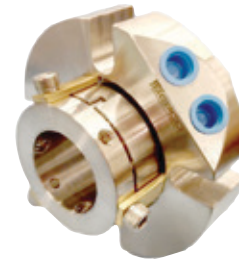
Multiple Springs

- Provides even mechanical loads
- Isolates the springs from the pumped product

Versatile

- Slotted seal gland
- Machined for superior strength & corrosion resistance
- Easily accessible flush connections





DRP Dual Rotary Pumper

MATERIAL SPECIFICATIONS

Metal Parts

- 316ss (Standard) w/ 17-4, Alloy 20, Nickel Alloys, Titanium and Hastelloy B & C (Optional)

Face Materials

- High-quality, Chemical-Grade Carbon, Silicon Carbide and Solid Nickel Bound Tungsten Carbide

O-rings

- Viton, EPR, Aflas (Standard) w/ Nitrile, Neoprene, or Perfluorinated Elastomers (Optional)

OPERATING CAPABILITIES

PRESSURE

Inboard (Product Side)
To 350 PSI

Inboard (Flush Side)
To 90 PSI (Differential)

Outboard
To 150 PSI

TEMPERATURE

Inboard Side
To 400° F (Dependent on Materials of Construction)

Outboard Side
To 250° F

Peripheral Speed
To 5000 FPM

