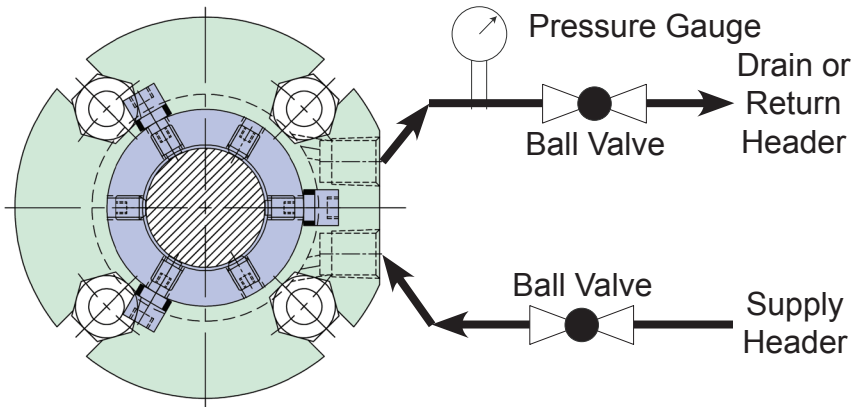
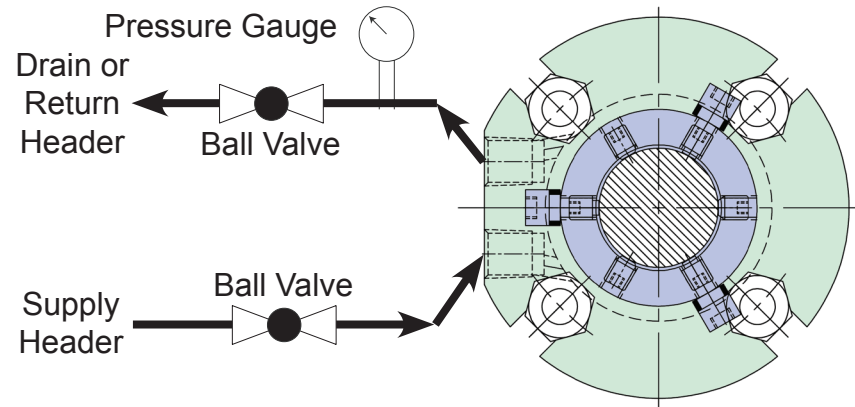


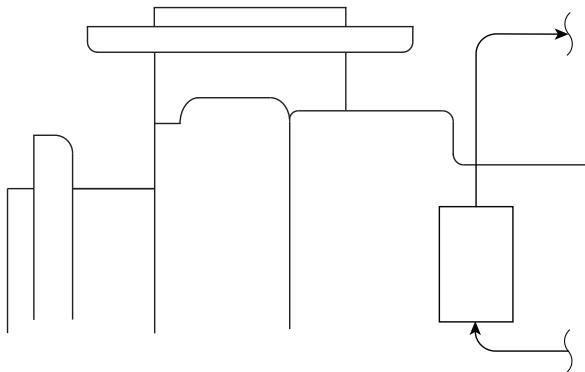
**Clockwise Rotation (Viewed from Motor End)**



**Counter Clockwise Rotation (Viewed from Motor End)**



**API Plan 54  
Circulation of Clean Fluid  
from an External System**



Install pressure gauge in lantern ring inlet connection to determine actual stuffing box pressure. Maintain flush pressure at 15-20 psig over stuffing box pressure.

