

Introducing the SEPCO Air Seal (SAS): Unleash the Power of Noncontact Sealing

In the relentless pursuit of efficiency, your industry demands sealing solutions that not only perform flawlessly but also drive down costs. Traditional contact seals like packing and mechanical seals often fall short, proving ineffective and costly to operate and maintain. It's time for a game-changer, and that's where the SEPCO Air Seal (SAS) steps in.

UNPARALLELED EFFICIENCY MEETS RELIABILITY

Our SAS is an ingeniously engineered pneumatic sealing system meticulously crafted to seal equipment shafts where conventional contact seals falter. Whether in wet or dry applications, SAS excels, particularly in the demanding realm of powder and bulk solid processes. Let's delve into its compelling features and benefits:

FEATURES & BENEFITS:

Efficient Design: SAS minimizes air consumption while maintaining a consistent internal sealing pressure profile.

It's all about doing more with less.

Longevity Assured: The SAS boasts a noncontact design that stands the test of time. Say goodbye to frequent replacements and costly downtime.

Built to Tolerate Movement: It's resilient to angular and parallel shaft movements, ensuring consistent performance even in challenging conditions.

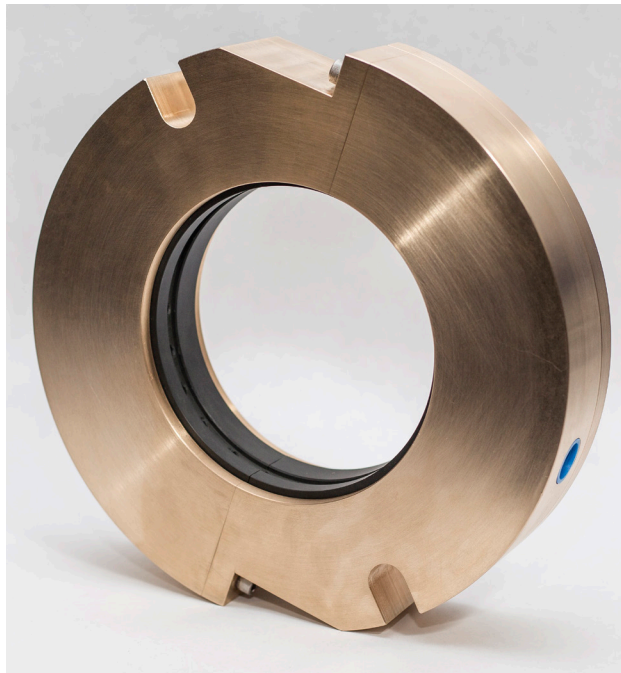
Versatile Across Environments: With pressures reaching up to 120 psi and a wide range of temperature-resistant materials available, the SAS adapts to diverse application requirements.

Split Seal Options: We offer split seals in most designs for added convenience and flexibility.

Custom Material Selection: Tailored to your specific needs, SAS offers a wide array of materials for diverse application requirements.

Minimal Maintenance: Once installed, the SAS requires little to no maintenance, allowing you to focus on what truly matters.

Wide Application Spectrum: SAS finds its place in bulk material handling equipment, including mixers, blenders, agitators, pulpers, screw conveyors, refiners, rotor valves, dryers, and elevators.



Continued.

HOW IT WORKS:

The SAS relies on precisely engineered clearances to establish a uniform sealing pressure/velocity profile using air or gas. This eradicates low-pressure areas and mitigates the risk of product ingress into the seal.

The pressure profile forms an internal circumferential boundary layer that combats the effects of shaft movement, thanks to the ingenious floating throttle design. The SAS's airflow control is tailored to your system requirements, ensuring a consistent velocity profile that safeguards your operations.

Installed correctly, the SAS is essentially a noncontact seal. In cases where angular misalignment might be a concern, we recommend the SAS-M variant. Rest assured, the SAS is engineered to meet your specific requirements and performance expectations, as depicted in Figure 3 for a detailed drawing of a solid assembled SAS.

THE SAS: A GAME-CHANGER FOR YOUR INDUSTRY

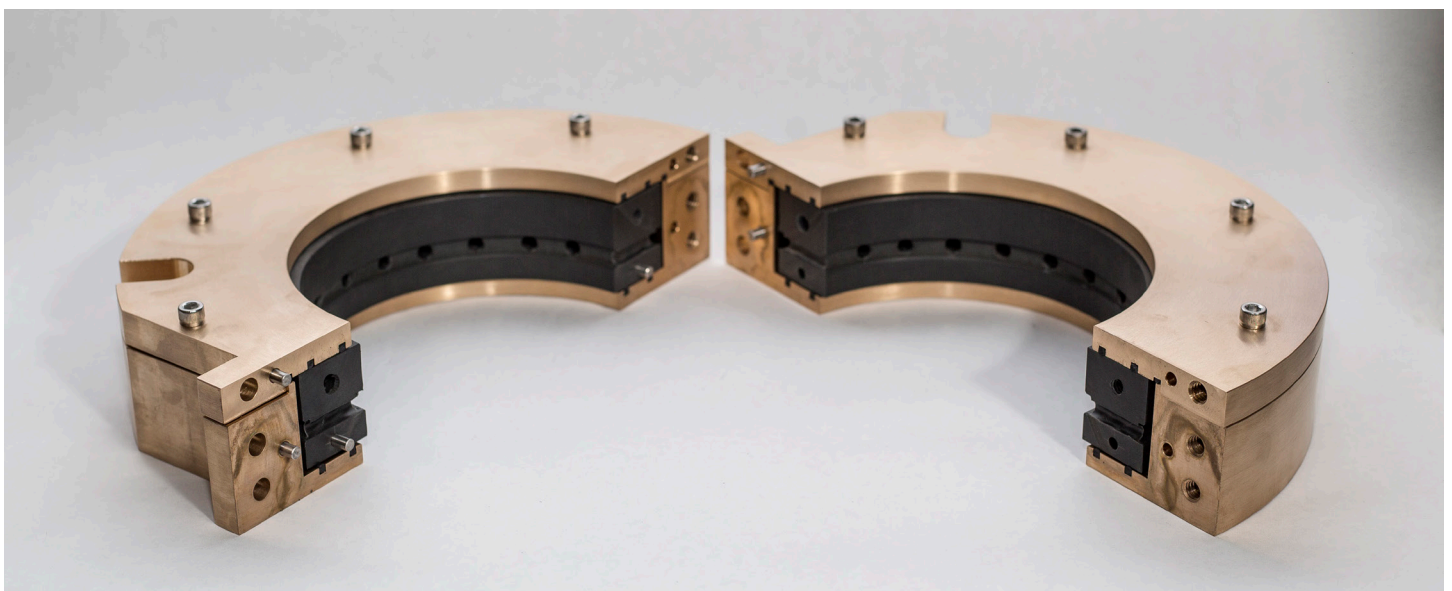
The SEPCO Air Seal (SAS) isn't just another sealing solution; it's a true noncontact air seal designed to tackle the toughest sealing challenges, particularly in powder and bulk solids handling. It's the ideal choice for assets such as mixers, blenders, agitators, pulpers, screw conveyors, refiners, rotor valves, dryers, and elevators.

UNLOCK UNRIVALED BENEFITS:

Reduced Operating Costs: Experience significant savings in product waste, labor, overtime, seal replacements, and downtime.

Maintenance-Free Sealing:

Our SAS requires no maintenance as long as a continuous air supply is maintained. Designed to keep product out of the seal or throttle area, it eliminates the need for regular upkeep.



INDESTRUCTIBLE MATERIAL:

The construction materials of the SAS are impervious to wear and corrosion. However, should system upsets occur and product enters the seal, rest assured that the SAS can be effortlessly disassembled, cleaned, and reassembled.

DESIGNED FOR SIMPLICITY:

In the rare event of an air supply interruption during operation, and with product introduction into the seal, the internal air passage may become obstructed, disrupting the pressure profile's uniformity. Fear not, for the SAS is designed for simplicity and can be easily rebuilt. Our dedicated representatives are always available to assist you if such a situation arises.



SEPCO SAS installed for a chocolate manufacturer

SAS STANDARD DESIGN PARAMETERS:

Working Pressures: Up to 120 psi

Maximum Misalignment Capability:

- Parallel: 0.0625 inch (total indicator reading)
- Angular: 1.5 degrees

INDUSTRIES WE SERVE:

The SEPCO Air Seal (SAS) is your trusted ally in several industries, including:

Pulp & Paper

Food & Beverage

Oil & Gas

Mining

Chemical

Water & Wastewater

Powder & Bulk Solids Handling

Cement



SEPCO SAS installed for a cement mixer

Make the leap to efficiency, reliability, and cost savings with the SEPCO Air Seal (SAS). Experience the transformational power of noncontact sealing and elevate your industry standards. Say goodbye to compromises and usher in a new era of productivity with SEPCO. Contact us today to explore how SAS can revolutionize your operations. Your success is our commitment.



SEPCO SAS installed for a pulp and paper manufacturer



Barrels of chocolate waste that preceded SAS installation

The SEPCO quality system is certified to ISO 9001:2015.
This information is based on data that we believe to be reliable. Since conditions of product use are outside of our control, we make no warranties, expressed or implied and assume no liability in connection with any use of this information.
©SEPCO 2020
V020521